

# Sepura Device Manager



**sepura**

Going further in critical communications

Sapura Device Manager (SDM) has been designed to offer a centralised management solution for mission critical customers. Its primary focus is to provide in-the-field device management via an LTE bearer allowing a customer to manage a device fleet in near real time. Utilising Over-the-Air (OTA) software upgrades and configuration management it brings a cost-effective solution for deploying and managing devices on an LTE network.

### SOFTWARE UPGRADES

Centrally managed software upgrades allow new features and fixes to be deployed, and give clear deployment progress updates while a device remains in service without the need for return to a service centre.

### CONFIGURATION DATA

SDM allows the creation of configuration sets for the SCU3 Broadband Vehicle Device. These configurations control parameters around power, audio gain and network bearer selection via a set of rules. A configuration can be created and edited using the simple to use graphical user interface (GUI) and then either applied directly to a group or one of the devices.

### DEVICE GROUPS AND POLICIES

A key strength of SDM is the ability to manage a group of devices centrally. This in combination with device groups and policies allows a user to quickly provision and manage a large fleet of devices. These device policies allow a set of configuration rules to be grouped into a policy and deployed at the touch of a button.

Once a device has had a policy applied, SDM will ensure that the device complies to the applied policy, any deviations from this policy will result in SDM attempting automatic correction or flagging that the device does not conform.

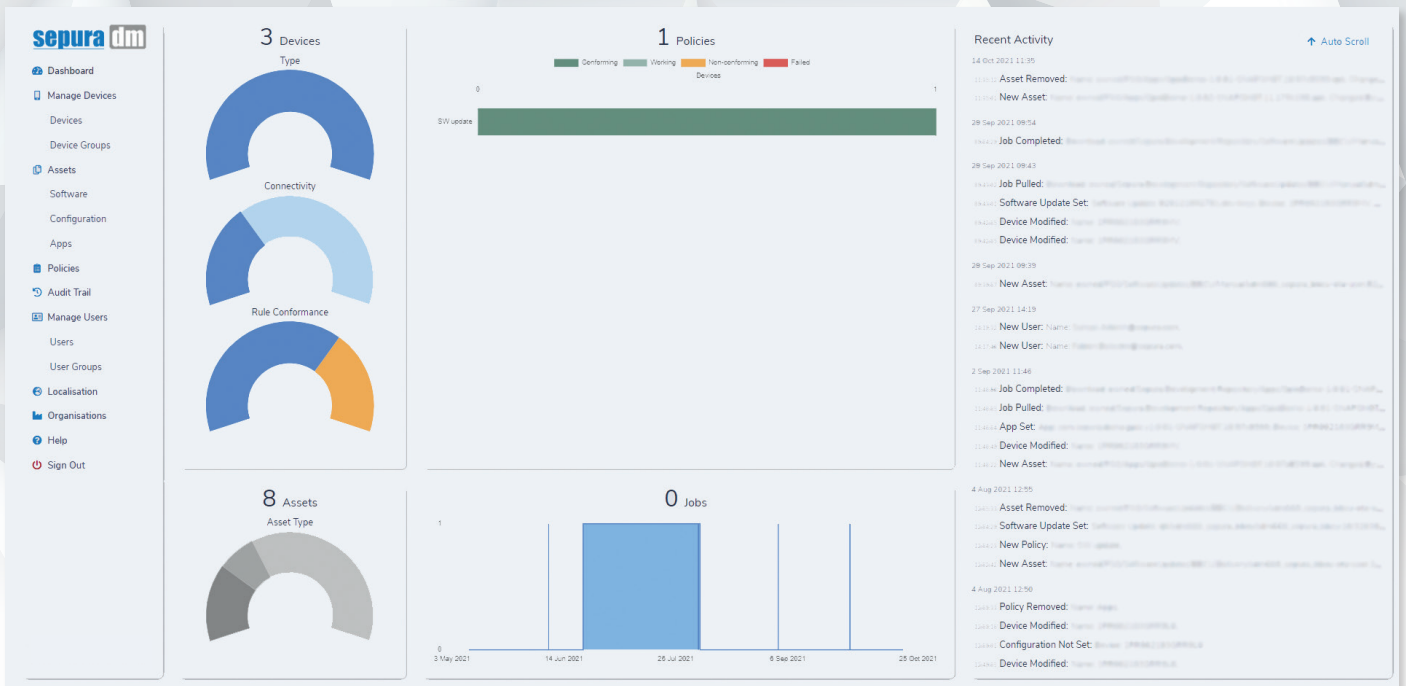
### USER AUTHORISATION

Users authorised to perform an activity ensures less mistakes in deploying important configuration and software updates. SDM provides full authorisation capabilities to allow an administrator to restrict or allow a user to perform certain activities.

### AUDIT TRAIL

SDM records details of every activity performed on the system, giving an administrator confidence that any activity can be tracked back to the user. Having this ability also allows tracking of any changes made to a device.

KEY FEATURE	BENEFIT
Authorisation	Full granular control over what capabilities a user has access to within the SDM Service
Audit Trail	Administrators can easily see what has been changed on the system and uploaded to devices
Bearer Selection Rules	Ability to define rules which control the destination bearer based on website and applications used
Software as a Service (SaaS) Deployment Model	Easy deployment through a secure hosted environment and normal web browser
Device Policies	Create a policy made up of multiple configuration rules which is enforced on a device once applied
Centralised Software Updates	Maintain and update devices with the latest security patches and feature updates from a central location. All progress can be tracked easily via a central dashboard



## DASHBOARD OVERVIEW:

The dashboard provides an easy entry point into the current status of the SDM system, providing details of devices, assets and current activity in real-time.

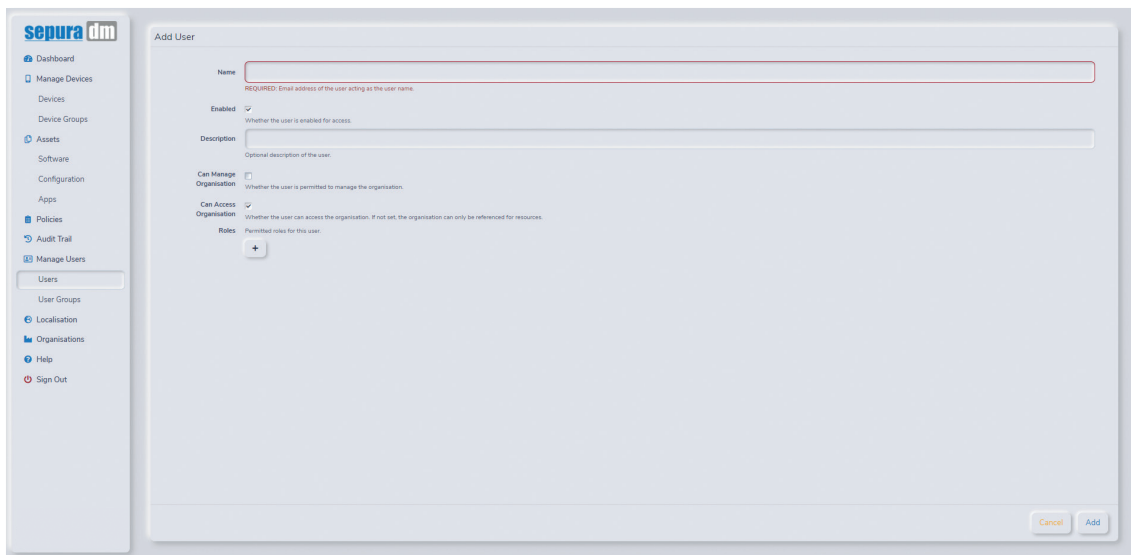
The configuration interface allows administrators to set up SCU3 configuration. It is divided into three main sections:

- Power Management:** Configuration for the SCU3 Power Management. Parameters include:
  - Low Voltage Threshold (mV): 6000
  - Power Up Voltage Threshold (mV): 9000
  - Power On/Off By Ignition:
  - Power Off Delay (hh:mm:ss): 00:00:10
  - Shutdown Display(s) On Power Off:
- Audio Management:** Configuration for the SCU3 Audio Management. Parameters include:
  - Accessory Hub 1: Microphone Gain (dB): 20
- Networking:** Configuration of SCU3 Networking Rules. Parameters include:
  - VLANs: Configuration of virtual VLANs. Maximum of 4094.
  - Ethernet Ports: Configuration of the SCU3 Ethernet Ports. Maximum of 4094.

The interface includes a sidebar with navigation options and a bottom right corner with 'Cancel' and 'Add' buttons.

## SIMPLE CONFIGURATION:

SDM gives an administrator control over a single or group of devices. Each device can have a configuration applied remotely. This configuration can contain power management, the Vehicle Control Unit (VCU) and networking configuration, as well as Android-specific control parameters.



**USER MANAGEMENT:**  
SDM allows the administrator to add additional users who can manage devices. These users can be restricted to a set of permissions, having better control of what users are permitted to do on the system.

**REVIEW AUDIT TRAILS:**

SDM contains a full audit trail of all actions performed by the customer on the organisation. This includes device operations as well as all other admin users.

Time	Severity	Title	Code	Description
14 Oct 2021 11:35	Info	Asset Removed	AST0002	Name: ownedPSSG/Apps/GpioDemo-1.0.01-SNAPSHOT.10.97:8599.apk, Changed By: ...
14 Oct 2021 11:35	Info	New Asset	AST0000	Name: ownedPSSG/Apps/GpioDemo-1.0.02-SNAPSHOT.11.179:190.apk, Changed By: ...
29 Sep 2021 09:54	Info	Job Completed	DEV1200	Download: ownedSepura Development Repository/Software/Updates/BBCU/Manualsdm660_sepura_bbcu-ota-user 82012110...
29 Sep 2021 09:43	Info	Job Pulled	DEV1000	Download: ownedSepura Development Repository/Software/Updates/BBCU/Manualsdm660_sepura_bbcu-ota-user 82012110...
29 Sep 2021 09:43	Info	Software Update Set	DEV3000	Software Update: 8201210927701-job-keys, Device: 1PRO02103GRR9MV, Policy: Device Software
29 Sep 2021 09:42	Info	Device Modified	DEV0001	Name: 1PRO02103GRR9MV, Changed By: ...
29 Sep 2021 09:42	Info	Device Modified	DEV0001	Name: 1PRO02103GRR9MV, Changed By: ...
29 Sep 2021 09:39	Info	New Asset	AST0000	Name: ownedPSSG/Software/Updates/BBCU/Manualsdm660_sepura_bbcu-ota-user 820121092701.zip, Changed By: ...
27 Sep 2021 14:19	Info	New User	USR0000	Name: Suman Adesh@sepura.com, Changed By: ...
27 Sep 2021 14:17	Info	New User	USR0000	Name: Fabien Delestr@sepura.com, Changed By: ...
2 Sep 2021 11:46	Info	Job Completed	DEV1200	Download: ownedSepura Development Repository/Apps/GpioDemo-1.0.01-SNAPSHOT.10.97:8599.apk, Device: 1PRO0211...
2 Sep 2021 11:46	Info	Job Pulled	DEV1000	Download: ownedSepura Development Repository/Apps/GpioDemo-1.0.01-SNAPSHOT.10.97:8599.apk, Device: 1PRO0211...
2 Sep 2021 11:46	Info	App Set	DEV9051	App: com.sepura.demo.gpio.v1.0.01-SNAPSHOT.10.97:8599, Device: 1PRO02103GRR9MV, Component: com.sepura.demo.g...
2 Sep 2021 11:46	Info	Device Modified	DEV0001	Name: 1PRO02103GRR9MV, Changed By: ...
2 Sep 2021 11:46	Info	New Asset	AST0000	Name: ownedPSSG/Apps/GpioDemo-1.0.01-SNAPSHOT.10.97:8599.apk, Changed By: ...
4 Aug 2021 12:55	Info	Asset Removed	AST0002	Name: ownedPSSG/Software/Updates/BBCU/Deliverysdm660_sepura_bbcu-ota-user 320300410324-release.zip, Changed By: ...
4 Aug 2021 12:54	Info	Software Update Set	DEV3000	Software Update: qbtsdm660_sepura_bbcu/dm660_sepura_bbcu-ota-user 1092030110324/320300410324-user/SDM4.1.15.0de...
4 Aug 2021 12:54	Info	New User	POLL000	Name: SW Update, Changed By: ...
4 Aug 2021 12:52	Info	New Policy	AST0000	Name: ownedPSSG/Software/Updates/BBCU/Deliverysdm660_sepura_bbcu-ota-user 32030110324.zip, Changed By: ...
4 Aug 2021 12:50	Info	Policy Removed	POLL002	Name: Apps, Changed By: ...
4 Aug 2021 12:50	Info	Device Modified	DEV0001	Name: 1PRO02103GRR9LD, Changed By: ...
4 Aug 2021 12:50	Info	Configuration Not Set	DEV3102	Device: 1PRO02103GRR9LD
4 Aug 2021 12:49	Info	Device Modified	DEV0001	Name: 1PRO02103GRR9LD, Changed By: ...
4 Aug 2021 12:49	Info	Software Update Not Set	DEV3002	Device: 1PRO02103GRR9MV
4 Aug 2021 12:49	Info	Device Modified	DEV0001	Name: 1PRO02103GRR9MV, Changed By: ...
4 Aug 2021 12:43	Info	Software Update Set	DEV3000	Software Update: qbtsdm660_sepura_bbcu/dm660_sepura_bbcu-ota-user 10920300410324/320300410324-user/SDM4.1.15.0de...
4 Aug 2021 12:43	Info	Device Modified	DEV0001	Name: 1PRO02103GRR9MV, Changed By: ...
4 Aug 2021 12:42	Info	Software Update Not Set	DEV3002	Device: 1PRO02103GRR9MV
4 Aug 2021 12:42	Info	Device Modified	DEV0001	Name: 1PRO02103GRR9MV, Changed By: ...
4 Aug 2021 08:37	Info	Job Completed	DEV1200	Download: ownedIaxams/Firefox.apk, Device: 1PRO02103GRR9MV, Job ID: 056a9890-c245-4417-9001-5891462f643f, Job...
4 Aug 2021 08:31	Info	Job Pulled	DEV1000	Download: ownedIaxams/Firefox.apk, Device: 1PRO02103GRR9MV, Job ID: 056a9890-c245-4417-9001-5891462f643f, Job...
3 Aug 2021 16:00	Error	Job Failed	DEV1200	Message: [q] ACEN10002: Invalid payload metadata, Download: ownedSepura Development Repository/Software/Updates/BBCU...
3 Aug 2021 16:00	Info	Job Pulled	DEV1000	Download: ownedSepura Development Repository/Software/Updates/BBCU/Deliverysdm660_sepura_bbcu-ota-user 320300...
3 Aug 2021 16:00	Info	Software Update Set	DEV3000	Software Update: qbtsdm660_sepura_bbcu/dm660_sepura_bbcu-ota-user 10920300410324/320300410324-user/SDM4.1.15.0de...

**Sepura UK**  
9000 Cambridge Research Park  
Beach Drive  
Waterbeach  
CAMBRIDGE  
CB25 9TL  
Tel: +44 (0)1223 876000

[www.linkedin.com/sepurapl](https://www.linkedin.com/sepurapl)   
[www.facebook.com/sepurapl](https://www.facebook.com/sepurapl)   
 @sepurapl   
[www.instagram.com/sepurapl](https://www.instagram.com/sepurapl)   
[www.youtube.com/sepurapl](https://www.youtube.com/sepurapl)   
[sales@sepura.com](mailto:sales@sepura.com) 



For a full list of offices and distributors or any other information, visit [sepura.com](https://www.sepura.com)

Copyright 2021 © Sepura Limited. All rights reserved.

Sepura's policy is to continually improve its products and services. The features and facilities described in this document were correct at publication, but are subject to change without notice.